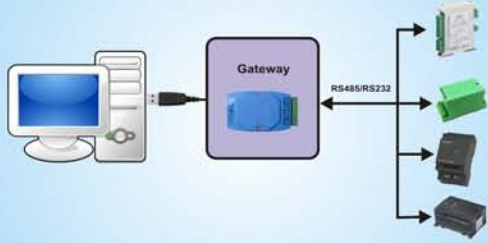


GATEWAYS



Features:

- Physical layer conversion from USB to RS232/RS485 and Vice versa
- Protocols conversion including Modbus and proprietary protocols
- Allows interfacing of legacy devices to PC
- Intelligent error reporting mechanism
- Allows long range communication with RS485

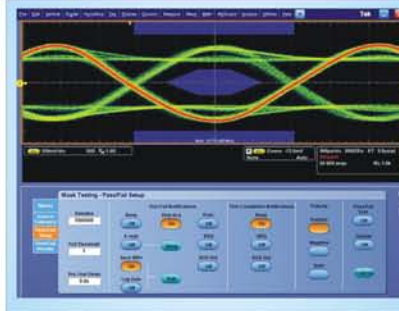
USB Gateway Variants

Features	Variants	
	GW120	GW130
Primary Interface	RS232	RS485
Secondary Interface	USB	
Protocols	Modbus ASCII / RTU, Proprietary protocols	
Power supply	5V DC Via USB	
Enclosure	Reliable and rigid enclosure made of ABS plastic	
Operating Temperature	-30 to +50 °C (-22 to +122 °F)	
Storage Temperature	-40 to +85 °C (-40 to +185 °F)	

PRISM DATA ACQUISITION SUITE

Features:

- PC based high speed monitoring suite for data logger and data acquisition devices
- Supports connectivity over USB, RS232, RS485, Ethernet, etc
- Facilitates user configuration of data channels of the connected devices
- Captured data can be recorded and played back later
- Perform mathematical and statistical operations on captured data
- Supports third party devices for monitoring and control
- Multiple visualization options such as graph, tables, seekers and many other widgets.
- Latest Metro style graphical interface
- Export data to MS Excel, Access, CSV, Text and other formats
- Application supported in Windows XP, Windows 7, Linux
- Free application for customers



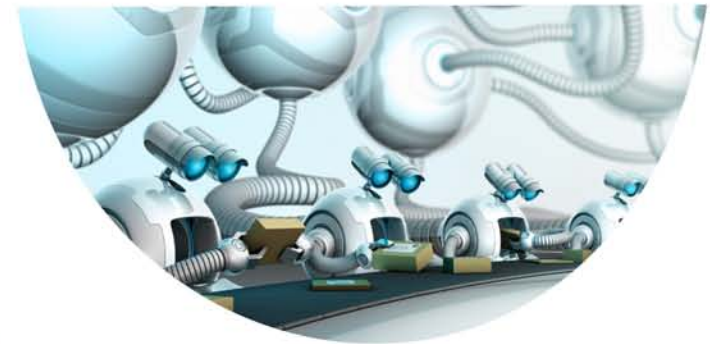
Corporate office:
Precisol Automation India Pvt Ltd,
No 3, 3rd Street,
Sankarapandi Nagar,
P&T Nagar Extn,
Madurai - 625 017.
Tel: +91-452-4522115

Bangalore
Precisol Automation India Pvt Ltd,
#44, 1st floor, 16th cross, 16th Main,
Opp to Mahadeshwara Layout Bus stand,
BTM II Stage,
Bangalore - 560 076.
Phone: +91-8056333955

Chennai
Precisol Automation India Pvt Ltd,
I Floor,
Santhanam Colony,
Anna Nagar West Extn,
Chennai - 600 101
Phone: +918056333955

Website: www.precisol-automation.com

Email: sales@precisol-automation.com



DATA ACQUISITION



Features:

- Multiple communication interface option includes USB, RS232/RS485
- Maximum of eight analog inputs with +/- 10V Full scale range
- Four digital inputs including timer/counter
- Up to eight digital outputs in Relay mode and Four digital outputs in digital switch mode
- Maximum digital output rating : Relay mode – 40V/600mA and digital switch mode – 60V/300mA
- Compact Form Factor (130 mm X 70 mm) with easy mounting options through flanges
- Offered with free Prism Data Acquisition software
- Suitable for applications such as capturing digital events like Alarm conditions, Counting events like user attendance, resource access, monitoring temperature and humidity, etc

Data Acquisition Variants

Features	Variants								
	AU101	AU111	AU122	AS101	AS111	AS122	AM101	AM111	AM122
ADC resolution	16 Bit								
Analog input range	+/-10V Full scale range								
Sampling rate	<1Hz to 10KHz								
Analog inputs	4	4	8	4	4	8	4	4	8
Digital Inputs	4								
Digital outputs	0	4	8	0	4	8	0	4	8
Digital Input Protection	+/- 30V DC								
Interface	USB			RS232			RS485		
Power supply	5V DC through USB interface								
Enclosure	Reliable and rigid enclosure made of ABS plastic								
Operating Temperature	-30 to +50 °C (-22 to +122 °F)								

GSM RELAY CONTROLLER

Features:

- GSM based remote controller and external event monitor device
- Maximum of eight outputs in relay mode and four outputs in digital switch mode
- Maximum digital output rating : Relay mode – 40V/600mA and digital switch mode – 60V/300mA
- Up to Four digital inputs with over voltage protection
- Easy remote control through simple SMS command
- Monitoring external events connected to the digital inputs through SMS command including auto update option
- Up to ten users can be added for authorised control or monitor operations
- Password protection and Admin control options
- Compact Form Factor (130 mm X 70 mm) with easy mounting options through flanges



GSM relay controller Variants

Features	Variants			
	V020	V001	V120	V101
Digital Inputs	0		4	
Digital outputs (Relay mode)	8	0	8	0
Digital outputs (Digital Switch mode)	0	4	0	4
Digital Input Protection	+/- 30V DC			
Connectivity	Dual band GSM			
Power supply	5VDC or 12VDC through external power adapter			
Enclosure	Reliable and rigid enclosure made of ABS plastic			
Operating Temperature	-30 to +50 °C (-22 to +122 °F)			

DATA LOGGER

Features:

- Cost effective range of data loggers
- Multiple communication option includes USB, RS232/RS485 and GSM/GPRS
- Maximum of eight analog inputs with +/-10V full scale range
- Maximum digital output rating : Relay mode – 40V/600mA and digital switch mode – 60V/300mA
- 16-bit resolution ADC's
- Variable logging interval supported
- Four digital inputs including timer/counter
- Up to eight digital outputs in Relay mode and Four digital outputs in digital switch mode
- Supports 2GB of internal memory with upgradable option
- Overvoltage protected inputs
- Compact Form Factor (130 mm X 70 mm) with easy mounting options through flanges



Data Logger Variants

Features	Variants							
	DU101	DU122	DS101	DS122	DM101	DM122	DG101	DG122
ADC resolution	16 Bit							
Analog input range	+/-10V Full scale range							
Analog inputs	4	8	4	8	4	8	4	8
Digital Inputs	4							
Digital outputs	0	8	0	8	0	8	0	8
Digital Input Protection	+/- 30V DC							
Interface	USB		RS232		RS485		GSM	
Storage	2GB internal memory with upgradable option							
Logging interval	1 Second to required duration							
Power supply	5VDC or 12VDC through external power adapter							
Enclosure	Reliable and rigid enclosure made of ABS plastic							
Operating Temperature	-30 to +50 °C (-22 to +122 °F)							

IO EXPANSION MODULES

Features:

- Input and output expansion module with RS232 or RS485 serial communication
- Up to Four digital inputs with over voltage protection
- Up to eight analog inputs with +/- 10V full scale range
- Up to eight digital outputs in relay mode and four digital outputs in digital switch mode
- Maximum digital output rating : Relay mode – 40V/600mA and digital switch mode – 60V/300mA
- Supports Modbus and other proprietary protocols
- Suitable for adding external IO interface to PLC and other industrial automation devices



IO modules Variants

Features	Variants					
	IS101	IS111	IS122	IM101	IM111	IM122
ADC resolution	16 bit					
Analog input range	+/- 10V Full scale range					
Analog inputs	4	4	8	4	4	8
Digital Inputs	4					
Digital outputs	0	4	8	0	4	8
Digital Input Protection	+/- 30V DC					
Interface	RS232			RS485		
Power supply	5VDC or 12VDC through external power adapter					
Operating Temperature	-30 to +50 °C (-22 to +122 °F)					
Storage Temperature	-40 to +85 °C (-40 to +185 °F)					